

GUITAR

GATEWAY to
JAZZ SERIES

Chart no. 1

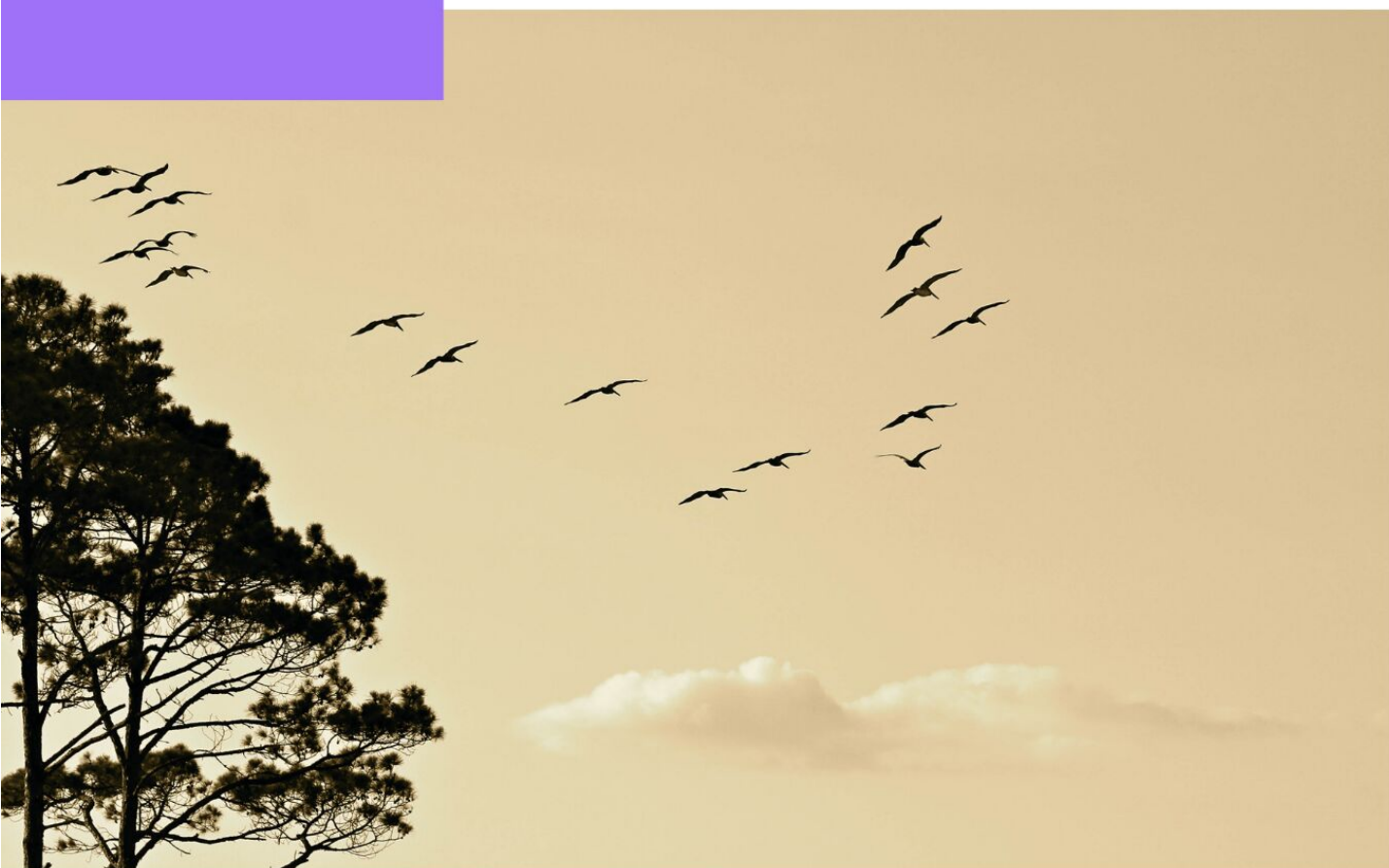
What's inside...

- Lead Sheet with TABs
- Graded transcriptions and chord diagrams for both Intermediate and Advanced players.

ORNITHOLOGY

Charlie Parker

transcribed by Michael New



ORNITHOLOGY

♩ = 180-240
Swing 8ths

Charlie Parker
transcribed by Michael New

Chords: GΔ, G-7, C7

Chords: FΔ, F-7, B♭7

Chords: E♭7, Aø7, D7, G-7, A-7, D7

Chords: B-7, E7, A-7, D7

2.

18 $G\Delta$ $A-7$ $D7$ $B-7$ $B\flat-7$ $A-7$ $D7$ $G\Delta$ $(A-7\ D7)$


2 0 0 3 1 0 3 0 3 2 3 1 2 1 0 1 4 1 1 4 0

<p>GΔ</p>	<p>G-7</p>	<p>C7</p>	<p>FΔ</p>	<p>F-7</p>
<p>Bb7</p>	<p>Eb7</p>	<p>Aø7</p>	<p>D7</p>	<p>A-7</p>
<p>B-7</p>	<p>E7</p>	<p>C-7</p>	<p>F7</p>	<p>Bb-7</p>

Charlie Parker
transcribed by Michael New

The solo is in 4/4 time and consists of 16 measures. The notation includes a treble clef, a key signature of one flat (Bb), and a tempo marking of 'Allegretto'. The solo is divided into four measures, each with a chord symbol: GΔ, G-7, C7, and G7. The notation includes various musical symbols such as eighth notes, quarter notes, and rests, as well as fingerings and a tablature line below the staff.

6 FΔ F-7 B♭7



TAB 1 2 3 3 1 2 3 6 6 5 3 2 5 3 3 3 6 5

10 E b 7 Aø7 D7 G-7 A-7 D7

1.

TAB 6-5-3-2-5-3-5-2-5-4-5-7-5-5-6-8-6-5-4-5-7

14 B-7 E7 $\flat 9$ A-7 D7 $\flat 9$

TAB

8 GΔ A-7 D7 B-7 B ♭ -7 A-7 D7 GΔ (A-7 D7)

18 $G\Delta$ $A-7$ $D7$ $B-7$ $B\flat-7$ $A-7$ $D7$ $G\Delta$ ($A-7$ $D7$)

TAB

7-5 5 8-6-5 8 9 7-7-6-6 8-6 7-5-5-5 6-4-5

$G\Delta$

3

x x

1 3 4 2

G-7

3

2 3—3

C_7

$F\Delta$

1 3 4 2

F-7

Diagram illustrating the F-7 chord on a guitar fretboard. The chord is formed by the notes F (3rd fret, 6th string), C (1st fret, 5th string), and Bb (4th fret, 4th string). The diagram shows the 6th string, 5th string, and 4th string, with frets 3, 1, and 4 marked. The notes are represented by black dots on the strings.

B b 7

x x x x x x

6

3 1 2

E b 7

Diagram illustrating a 4x4 grid with 4 dots. The dots are located at positions (row, column): (1, 3), (2, 2), (3, 4), and (4, 1). The columns are labeled 3, 2, 4, 1 from left to right. The rows are labeled 4, 3, 2, 1 from top to bottom. The top-left corner is labeled 'x' and the top-right corner is labeled 'x'.

$A\emptyset 7$

A 4x4 grid with columns labeled x , 0 , x and rows labeled 4 , 3 , 2 , 1 . Black dots are placed at $(0, 3)$, $(1, 3)$, and $(2, 4)$.

D7

3 2 4 1

A-7

Diagram A-7 shows a 3x4 grid. The top row has 'x' marks at the first and fourth columns. The bottom row has a '2' at the first column and '3-3' at the second and third columns. The left side has a '3' at the top row. There are four dots at the bottom row, one in each column.

B-7

6

2 3 — 3

E7 \flat 9

A diagram of a guitar fretboard showing the fingering for an E7(b9) chord. The diagram is a 4x4 grid representing frets 1-4 and strings 6-3. Frets are labeled 1, 2, 3, 4 at the bottom. Strings are labeled 6, 5, 4, 3 on the left. The chord notes are: 6th string, 2nd fret (G); 5th string, 1st fret (D); 4th string, 3rd fret (G); 3rd string, 1st fret (Bb). Fingering numbers are: 2 (under G on 6th string), 1 (under D on 5th string), 3 (under G on 4th string), 1 (under Bb on 3rd string). The notes G and Bb are marked with an 'x' above them, indicating they are the 7th and 9th of the chord.

C-7

6

x x

2 3 — 3

B \flat -7

6

2 3 — 3

D7 \flat 9

A fretboard diagram for a guitar. The top of the diagram is labeled 'D7 \flat 9'. The diagram shows a section of the fretboard with four vertical lines representing strings. The strings are numbered at the bottom: 2, 1, 3, 1 from left to right. The frets are numbered at the top: 4, 3, 2, 1 from left to right. There are four black dots representing fretted notes: on the 2nd string at the 4th fret, on the 1st string at the 3rd fret, on the 3rd string at the 2nd fret, and on the 1st string at the 1st fret. The 4th string is not shown.